

# inStudio

## Restore+

CAD/CAM SOLUTION FOR THE  
PROSTHODONTIC SPECIALIST.

*inStudio Restore+* is a full-featured system for the prosthodontic specialist that expands the capabilities of *Restore+* by adding the capability to process custom implant abutments and other prostheses from hard materials such as titanium and cobalt-chrome.

Coupling Axsys' expertise with the quality and precision of Versamill technology provides the most comprehensive abutment machining solution available. Produce restorations of superior quality and handle the widest variety of design characteristics - even those of extreme divergence.



### INDICATIONS

- Inlays, onlays, copings, crowns, veneers, splints, guides.
- Removable & fixed bridges, models, abutments, zirconia bars (with optional modules).
- Process PMMA, zirconia, PEEK composites, glass-ceramic, titanium, cobalt-chrome and more.
- High-Accuracy 6-unit pre-form abutment holding fixture.

### UNMATCHED QUALITY

At the heart of our *inStudio Restore+* stands our Versamill 5X200 precision dental machining center designed to perform reliably with high-precision for the long term. Its class-leading 3Kw spindle, cast aluminum-alloy frame and rigid fixturing enable the Versamill 5X200 to process any dental material from zirconia and PMMA to delicate glass-ceramics as well as hard metals such as titanium, cobalt-chrome and stainless steel quickly, with precision and quality that will astound both you and your patients.

With *inStudio Restore+* you produce custom titanium abutments in as little as 18 minutes and install them within seconds of fabrication with unmatched off-the-machine quality and outstanding tissue response.

### RIGID CONSTRUCTION

- Vibration-absorbing cast aluminum-alloy frame.
- Zero-stack tolerance, 5-axis trunnion.
- Linear guides & ballscrews with preloaded bearings.
- Closed-loop system with smooth motion servo motors and position encoders.





## POWERFUL SCANNING & DESIGN

*Restare* utilizes 3Shape 3D dental scanners providing speed and accuracy with a wide selection of intraoral and desktop scanners.

Model Free Workflow with automatic 3-axis, double-sided auto impression scanning. You can simply scan your patient and/or scan the impression immediately upon completion and begin designing.

3Shape's quality hardware and software work together to bring your practice the most comprehensive scanning solutions in the dental industry.

*Restare+*'s 3Shape- and exocad-based, cameo CAD software is known for its speedy operation and ease of use, helping you minimize training costs and maximize productivity. It is reliable and robust even when dealing with complex cases. The speed and flexibility of 3Shape and cameo™ DentalCAD is achieved through harnessing the latest research in the area of organic modeling. Also included is our custom libraries providing support of the widest variety of cases and the most esthetic of emergence profiles as well a high-performance color workstation configured to meet the resource requirements of *Restare+*.



### BASE INDICATIONS

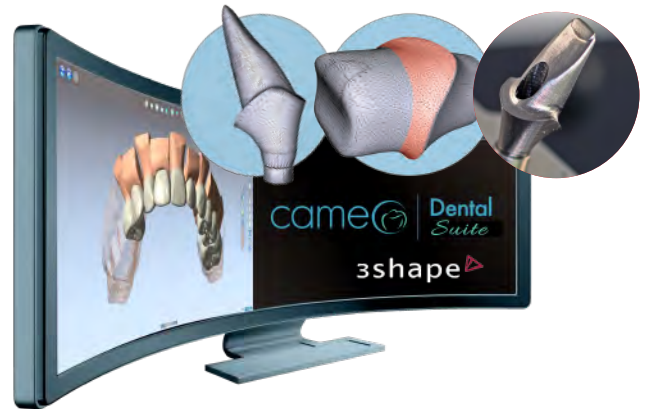
Anatomic Crowns, Simple & Anatomic Copings, Inlays & Onlays, Veneers, Wax-Ups, Telescopic Crowns, Bridge Frameworks, Attachments, Custom Abutments.

### INCLUDED ADDITIONAL MODULES

Bite Splint, Virtual Articulator, Model Creator, Tooth Library, True Smile, Provisional, Full Denture, Partial Framework, Implant.

### OPTIONAL MODULES

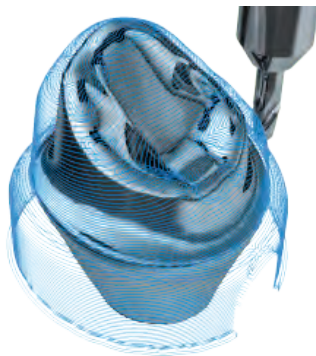
DICOM, Bar, Dentalshare.



## CAM : PROVEN & FULL-FEATURED

*Restare+* utilizes hyperDENT CAM software from FOLLOW-ME! Technology Group.

hyperDENT incorporates efficient, proven milling cycles from the industrial segment to provide maximum process stability and indication quality, including patent-protected milling strategies used for complex materials ensuring perfect surface quality while maximizing tool life.



### OPTIONAL MODULES

Full Denture, Template Generator

As with our Versamill machine technology, we leverage our 40 years of digital design and manufacturing experience - spanning all market segments including the dental industry - to provide additional software enhancements over and above a vendors' standard deliverable product. These unique enhancements, which are not available from any other supplier, provide additional functionality, while assuring unrivaled reliability and increased productivity.

### Versamill 5X200 Specifications

Number of axes:		5 simultaneous
Travel (x, y, z axis):	(mm)	330 x 146 x 145
A Rotational axis:	(degrees)	360
B Rotational axis:	(degrees)	±30
Drive Mechanism:		Ball screw
Way System:		Linear Guide
Repeatability:	(µm)	±3.0
Spindle Power:	(watts)	DC 3,000 max
Spindle Speed:	(rpm)	5,000 - 60,000
ATC number of tools:	6.0mm Ø	15
Axis Drive System	Closed-Loop	Servo Motor w/Encoder
Blank disc diameter:	(mm)	100 Ø
Machine size (W x H x L):	(mm)	745 x 1765 x 830
Installation Space (W x H x L):	(mm)	1220 x 2025 x 900
Weight:	(Kg)	405Kg
Input Power	(VAC/50-60Hz)	220-240 VAC single Ø